



NEW SCIENCE BUILDING SECOND FLOOR TORNADO SHELTER AREAS

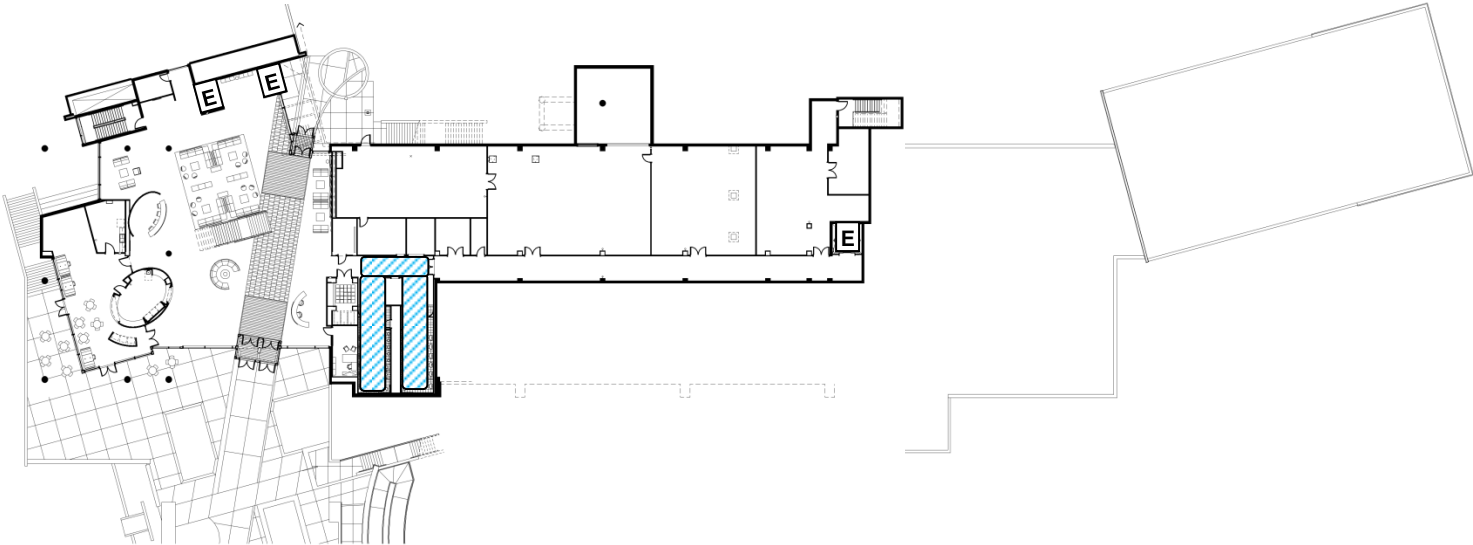


Legend

Stairs

Elevator

Tornado Shelter



WALLACE BUILDING
CHAPEL AND PLAZA
POWELL BUILDING

KIT CARSON DRIVE

Go to the Interior Core of the Lowest Level Possible and Avoid Sources of Flying Debris (Windows and Doors)



<http://www.crh.noaa.gov/hazards/lmk>

EKU Emergency Management 2-10-2012

Tornado Shelter Areas

- When a tornado warning is issued, everyone move to the tornado shelter areas indicated on the floor plan.
- Avoid doors, windows, and sources of flying debris.
- Remain in the shelter areas until an all clear is issued or until all wind and noise subside.
- Please assist those with disabilities to the shelter areas.
- If available, bring flashlights, jackets, blankets, and wear hard shoes.

