



NEW SCIENCE BUILDING FOURTH FLOOR TORNADO SHELTER AREAS

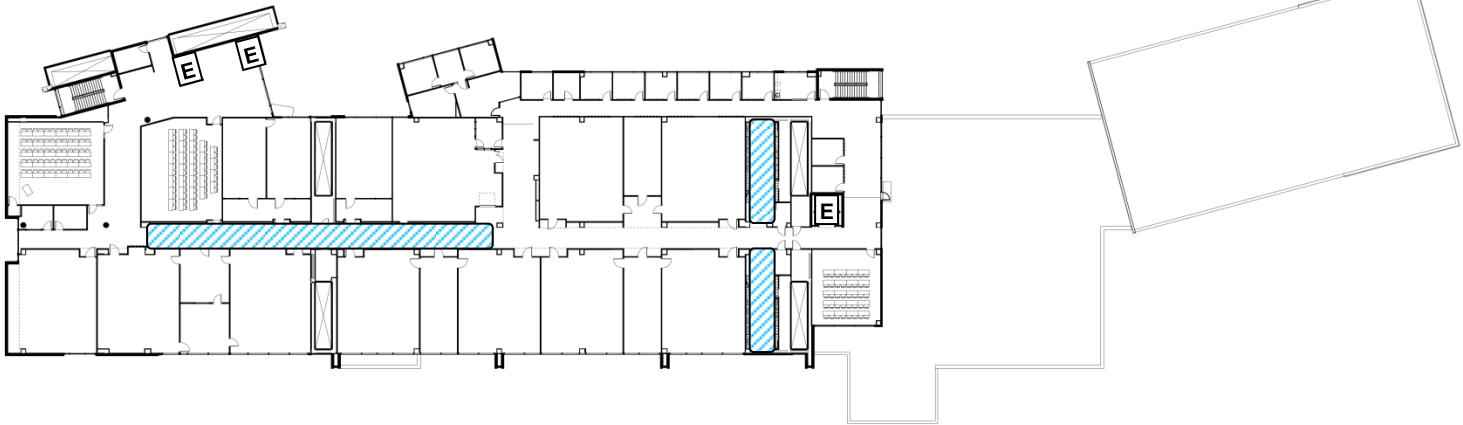


Legend

Stairs

Elevator

Tornado Shelter



WALLACE BUILDING
CHAPEL AND PLAZA
POWELL BUILDING

KIT CARSON DRIVE

**Go to the Interior Core of
the Lowest Level Possible
and Avoid Sources
of Flying Debris
(Windows and Doors)**



EKU Emergency Management 2-10-2012

<http://www.crh.noaa.gov/hazards/lmk>

Tornado Shelter Areas

- When a tornado warning is issued, everyone move to the tornado shelter areas indicated on the floor plan.
- Avoid doors, windows, and sources of flying debris.
- Remain in the shelter areas until an all clear is issued or until all wind and noise subside.
- Please assist those with disabilities to the shelter areas.
- If available, bring flashlights, jackets, blankets, and wear hard shoes.

