



NEW SCIENCE BUILDING FIFTH FLOOR TORNADO SHELTER AREAS

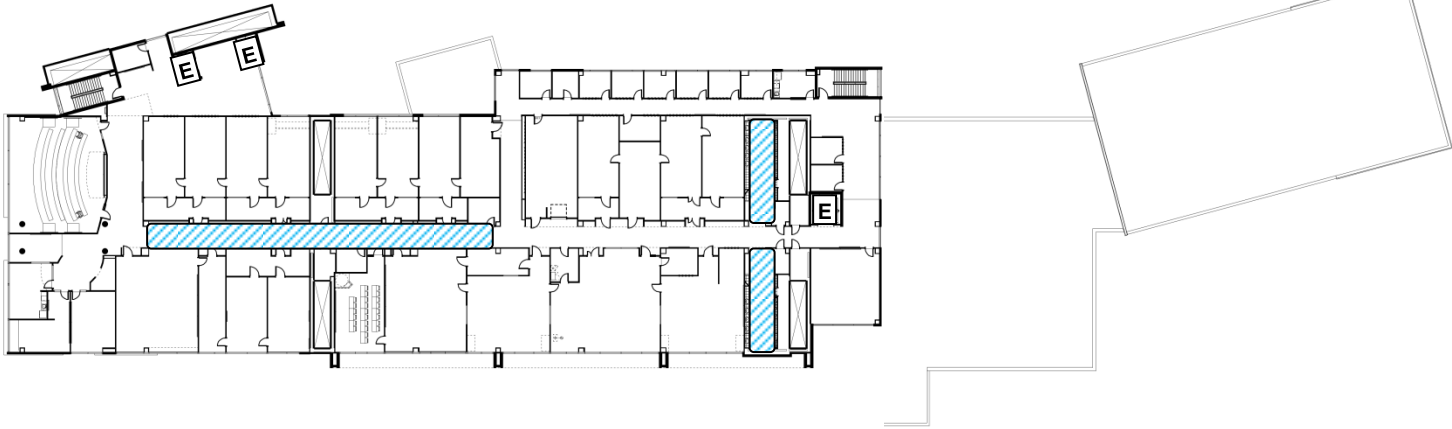


Legend

Stairs

Elevator

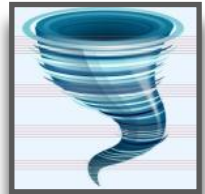
Tornado Shelter



WALLACE BUILDING
CHAPEL AND PLAZA
POWELL BUILDING

KIT CARSON DRIVE

**Go to the Interior Core of
the Lowest Level Possible
and Avoid Sources
of Flying Debris
(Windows and Doors)**



<http://www.crh.noaa.gov/hazards/lmk>

EKU Emergency Management 2-10-2012

- Tornado Shelter Areas**
- When a tornado warning is issued, everyone move to the tornado shelter areas indicated on the floor plan.
 - Avoid doors, windows, and sources of flying debris.
 - Remain in the shelter areas until an all clear is issued or until all wind and noise subside.
 - Please assist those with disabilities to the shelter areas.
 - If available, bring flashlights, jackets, blankets, and wear hard shoes.